

# F02

## CENTRONIC PCB STRAIGHT



POSITION	A	B	C	D
14F	25.20	36.00	43.90	22.70
24F	36.00	46.80	54.70	33.50
36F	48.90	59.70	67.70	46.60
50F	64.10	74.90	82.80	61.70

FEMALE W/LATCH

POSITION	A	B	C	D
14M	25.50	36.00	43.90	22.70
24M	36.30	46.80	54.70	33.50
36M	49.30	59.70	67.70	46.60
50M	64.40	74.90	82.80	61.70

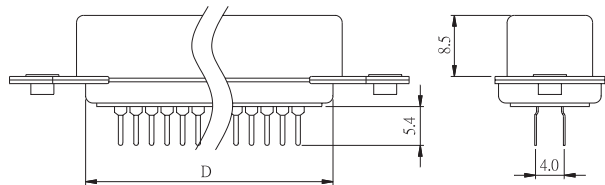
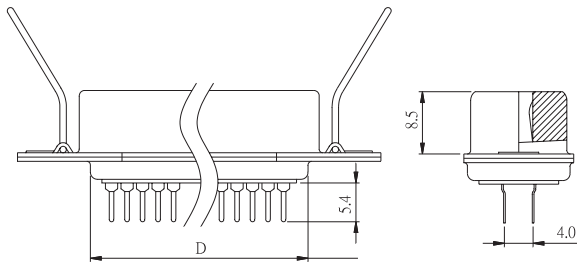
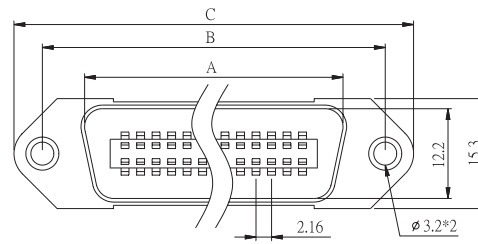
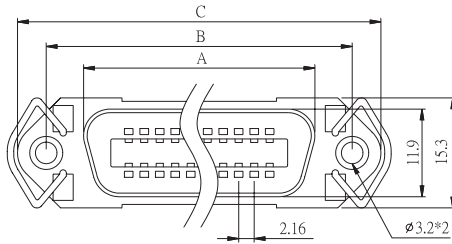
MALE W/O LATCH

POSITION	A	B	C	D
14F	25.20	36.00	43.90	22.70
24F	36.00	46.80	54.70	33.50
36F	48.90	59.70	67.70	46.60
50F	64.10	74.90	82.80	61.70

FEMALE W/O LATCH

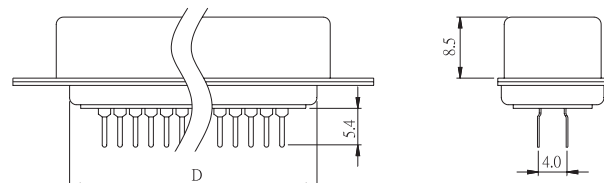
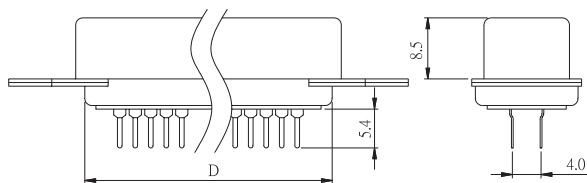
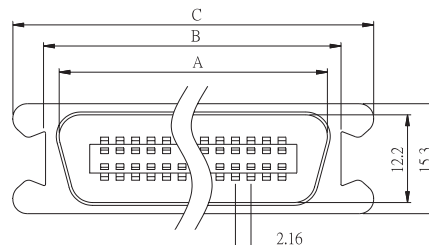
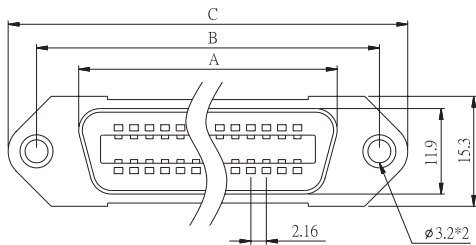
POSITION	A	B	C	D
14M	25.50	29.40	38.50	21.90
24M	36.30	40.20	49.30	32.70
36M	49.30	53.50	62.00	45.80
50M	64.40	68.30	77.40	61.10

MALE-MOLDED TYPE



FEMALE W/LATCH

MALE W/O LATCH



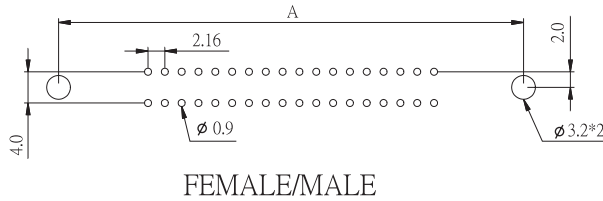
FEMALE W/O LATCH

MALE-MOLDED TYPE

# F02

## CENTRONIC PCB STRAIGHT

### P.C.BOARD LAYOUT PATTERN



POSITION	A
14M/F	29.40
24M/F	40.20
36M/F	53.50
50M/F	68.30

### HOW TO ORDER:

F02 -  1 -  2 -  3 -  4 -  5 -  6 -  7

1.NO. OF CONTACT	2.CONTACT TYPE	3.CONTACT PLATING	4.SHELL PLATING
14 24 36 50	M: MALE (PANEL TYPE) A: MALE (WITH NOTCH EAR) F: FEMALE	T: TIN PLATED S: SELECTIVE G: GOLD FLASH A: 5u" INCH GOLD B: 10u" INCH GOLD C: 15u" INCH GOLD D: 30u" INCH GOLD	N: NICKEL
5.MOUNTING METHOD	6.ACCESSORIES	7.INSULATOR COLOR	
A: THROUGH HOLE B: THREAD INSERT #4-40 UNC C: NO OPTION	A: WITH LATCH B: NON ACCESSORIES	1. BLACK 3. BLUE	

F